



StarMarine
CHEMICALS

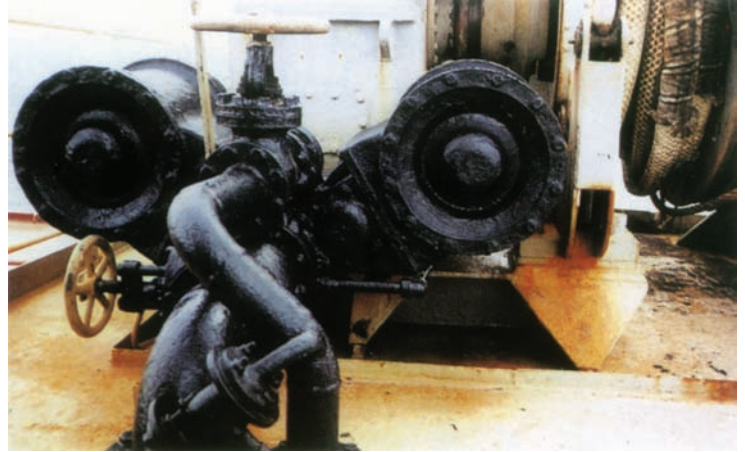
NEW IMPROVED FORMULA!
BETTER PERFORMANCE AT LOWER COST

RESKOTE T-GUARD

For problems like this...



To... Effective long term economical protection like this!



Applied at only half the thickness of old formula - twice as economical!

Double Overlapping Pigment System - Provides extra tough but flexible film, improved adhesion to substrate, resistance to abrasion plus resistance to UV, moisture transmission and washout.

Solvent Free - Environment friendly, very high flash point, extra safety margin for use, handling, storage and shipment.

RESKOTE T-GUARD is a viscous, high build compound that requires only minimal surface preparation and is easily applied by brushing... no more messy and wasteful smearing of greasy material.

RESKOTE T-GUARD withstands higher temperatures for longer periods than any similar product and drastically reduces repair and maintenance cost.

Used by major international tanker operators.

RESKOTE T-GUARD stops corrosion of
DECK STEAM LINES - STEAM VALVE MANIFOLDS - WINDLASS STEAM CHESTS
I.G.S. LINES & EXPANSION BELLOWS - DECK HYDRAULIC LINES



RESKOTE T-GUARD protects deck steam lines, steam valve manifolds and windlass steam chests from the destructive and costly effects of corrosion on sea going vessels and has proven to be especially effective against the very severe conditions found on chemical and product carriers.

RESKOTE T-GUARD withstands higher temperatures for longer periods than any similar product and even proved to be effective on inert gas scrubber inlet elbows and expansion bellows where temperatures do not exceed 225°C

RESKOTE T-GUARD, when applied to cold surfaces, will skin over and be dry to touch within 6 to 8 hours after applying. The body of the coating however, will remain semi-fluid for several months at ambient temperature depending upon the applied film thickness.

TYPICAL CHARACTERISTICS:

Description: Oil modified resin
 Color: Black
 Flash Point: (PMCC) Over 280°C (536°F)

PACKING: 18/kg (net) non-returnable open head steel pails.

SURFACE PREPARATION:

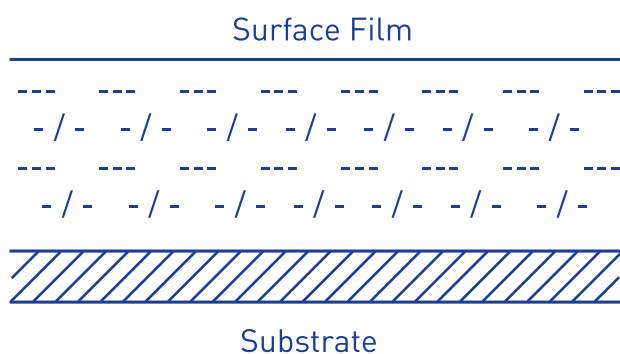
Scrape off loose rust and flaking paint, chip off large rust deposits, sweep or blow with compressed air to remove loose rust and dirt particles, wipe oily deposits off with thinner and ensure that surfaces are thoroughly dry.

APPLICATION:

Simply brush on at 1 .0 to 1 .5 millimeters thickness. After application, allow minimum of 24 hours curing at ambient temperature before putting steam on line. Allow approximately one third pail for each set of windlass steam chests. To determine the approximate number of pails required for pipe lines, use following formula:

$$\frac{\text{Pipe Dia. (mm)} \times 3.14 \times \text{Pipe Run (meters)} \times 1.1}{18,000} = \text{Pails Required}$$

Diagrammatic cross section indicating barrier effect of double overlapping pigment system of **RESKOTE T-GUARD**.



Inert gas line coated with T-GUARD

WWW.STARMARINE.NL is the sole supplier of **RESKOTE T-GUARD**.